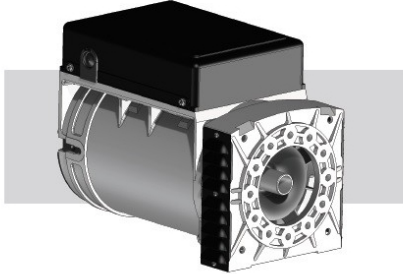


MECC ALTE ES20F-200 SINGLE PHASE ALTERNATOR 11 KVA AVR

Reference: ES20F-200



Designed to be exceptionally versatile, these portable products are manufactured to be suitable for all applications where an easy transportable energy source is needed. These portable alternators are available with a 50 or 60 Hz frequency, all with 2 poles ranging from 1 - 18 KVA available either as single bearing or as twin bearing with a double support. In order to couple them to a prime mover it is possible to choose among a wide range of shafts, flanges and couplings. The 2 pole rotors have a damper cage and the stator windings have a shortened pitch to reduce the harmonic content. The single phase units are designed brushless and have a high operating reliability. Minimal maintenance is required as there are no collectors or sliding contacts. The three phase range is designed with brushes and a slip ring and is transformer-controlled. This enables a high pick-up capacity ideal for motor start applications.

For more specialist applications, a high performance range of Automatic Voltage Regulator (AVR) machines is available. The ES range is single phase AVR-controlled but designed with brushes and a slip ring to allow for good voltage regulation and improved motor starting; supply loads different than power factor 1.0 such as modern electronics or pumps. The ET alternators are a three phase version of this type of machine. Both types have adjustable voltage output, a stabilizing point and under frequency protection as standard.

In addition, it's possible to also supply a capacitor-controlled AVR, the RCM/2, which improves voltage control to 2.5% available on the machines without brushes.

The single phase portable series is manufactured according to, and to comply with, the most common specifications such as CEI 2-3, IEC 34-1, EN 60034-1, IEC 34-1, VDE 0530, BS 4999-5000, NF C 51-111, CAN/CSA-C22.2 No100-95. It also complies with the European Community Standards: 72/23, 98/37, 89/336. The three phase portable series is manufactured according to CEI 2-3, IEC 34-1, EN 60034-1, IEC 34-1, VDE 0530, BS 4999-5000, NF C 51-111.

Not binding images and technical data.

Technical Sheet

Phase	Single phase
Maximum power single phase (KW)	11.8
Continuous power single phase (KW)	11
Maximum power single phase (KVA)	11.8
Continuous power single phase (KVA)	11
Frequency (Hz)	50
Voltage (V)	115 / 230
Engine rpm (rpm)	3000

Poles	2
Single-phase power (KVA)	11.8
Efficiency (%)	80.7
Protection degree	IP23
Acoustic pressure	65 dB(A) at 7 m
Length (mm)	445
Width (mm)	245
Height (mm)	296
Brushes	Yes
PMG	No
Type of alternator	Constant Speed
Voltage regulator	AVR
Weight (Kg)	56